



Integrated Drug Discovery from Hit Generation to Preclinical Candidate with Enamine Discovery Switzerland

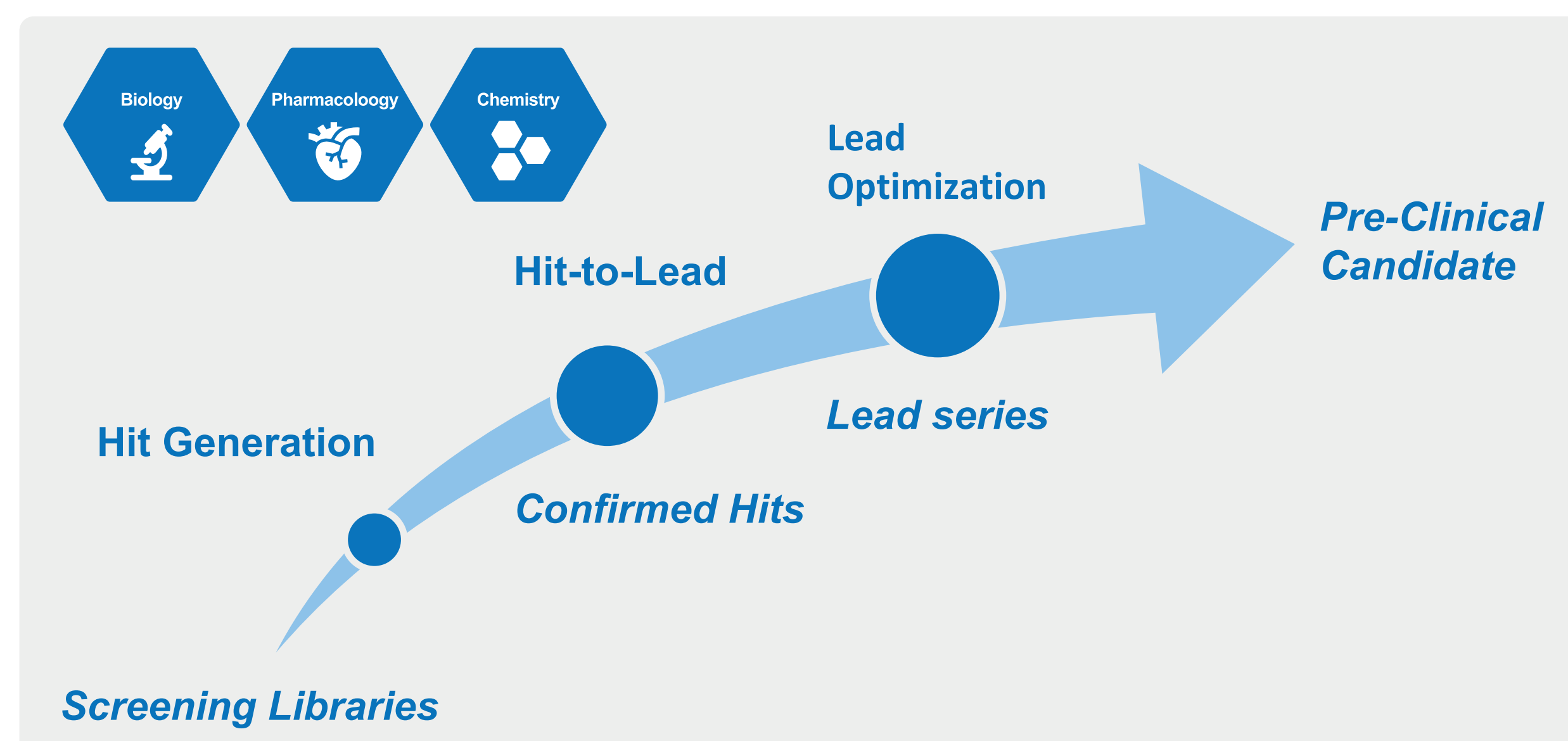
A.Bugera¹, D.Pozzi¹, C.Vaillant¹, T.Kimmerlin¹

¹ Enamine Ltd., Winston Churchill Street 78, 02094 Kyiv (Ukraine)

Drug Discovery Need? Contact Us!

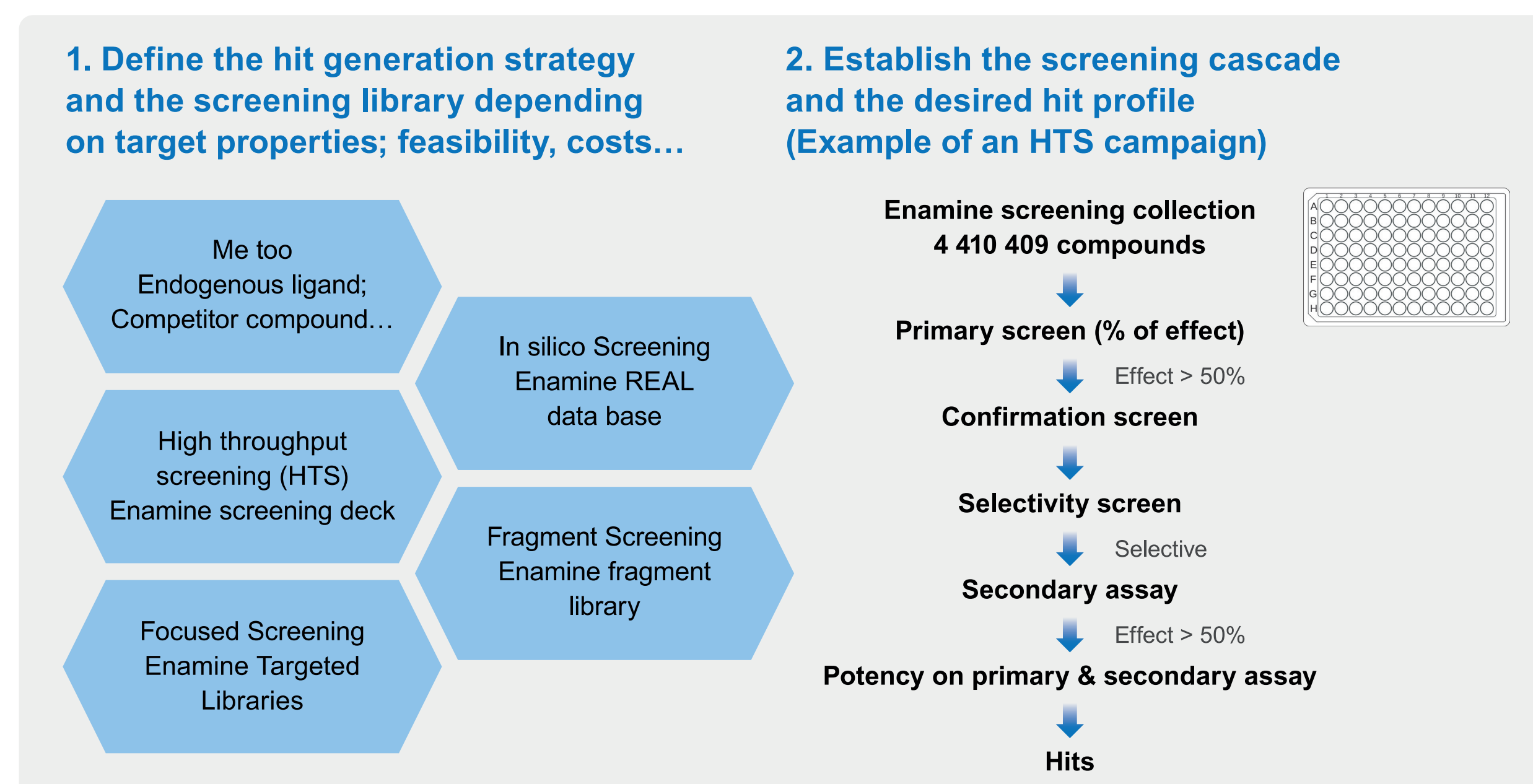
Enamine Discovery Switzerland: Your Discovery Engine

Enamine Discovery Switzerland accelerates drug discovery from hit identification to preclinical candidate selection by leveraging expert medicinal chemists, world-class organic chemistry, vast building block libraries, and advanced pharmacology and biology platforms. Our flexible approach delivers smart solutions to identify hit compounds and drive your molecule toward the clinic.



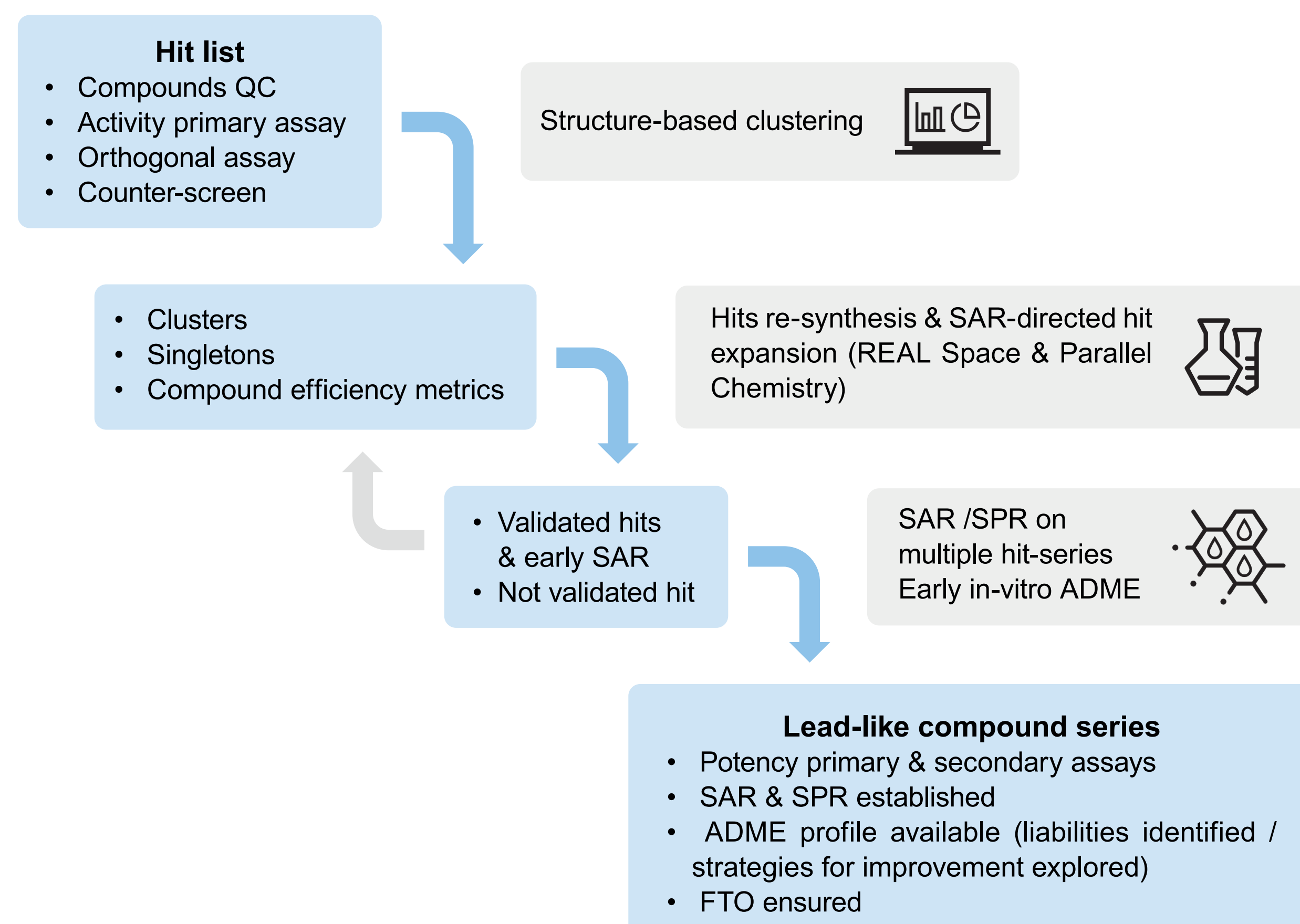
Hit Identification

Hit Identification is a critical phase in drug discovery, laying the foundation for all subsequent development by identifying high-quality starting points. It involves two key steps:



Hit to Lead (H2L)

From a hit list, medicinal chemists cluster and prioritize compounds based on activity, selectivity, LE, LLE, and physicochemical properties. Prioritized hits are resynthesized and expanded via SAR to yield validated leads. These undergo broader SAR/SPR studies, ADME, and in vitro tox profiling, resulting in lead series with confirmed potency, defined ADME, known liabilities, synthetic feasibility, and IP assessment.

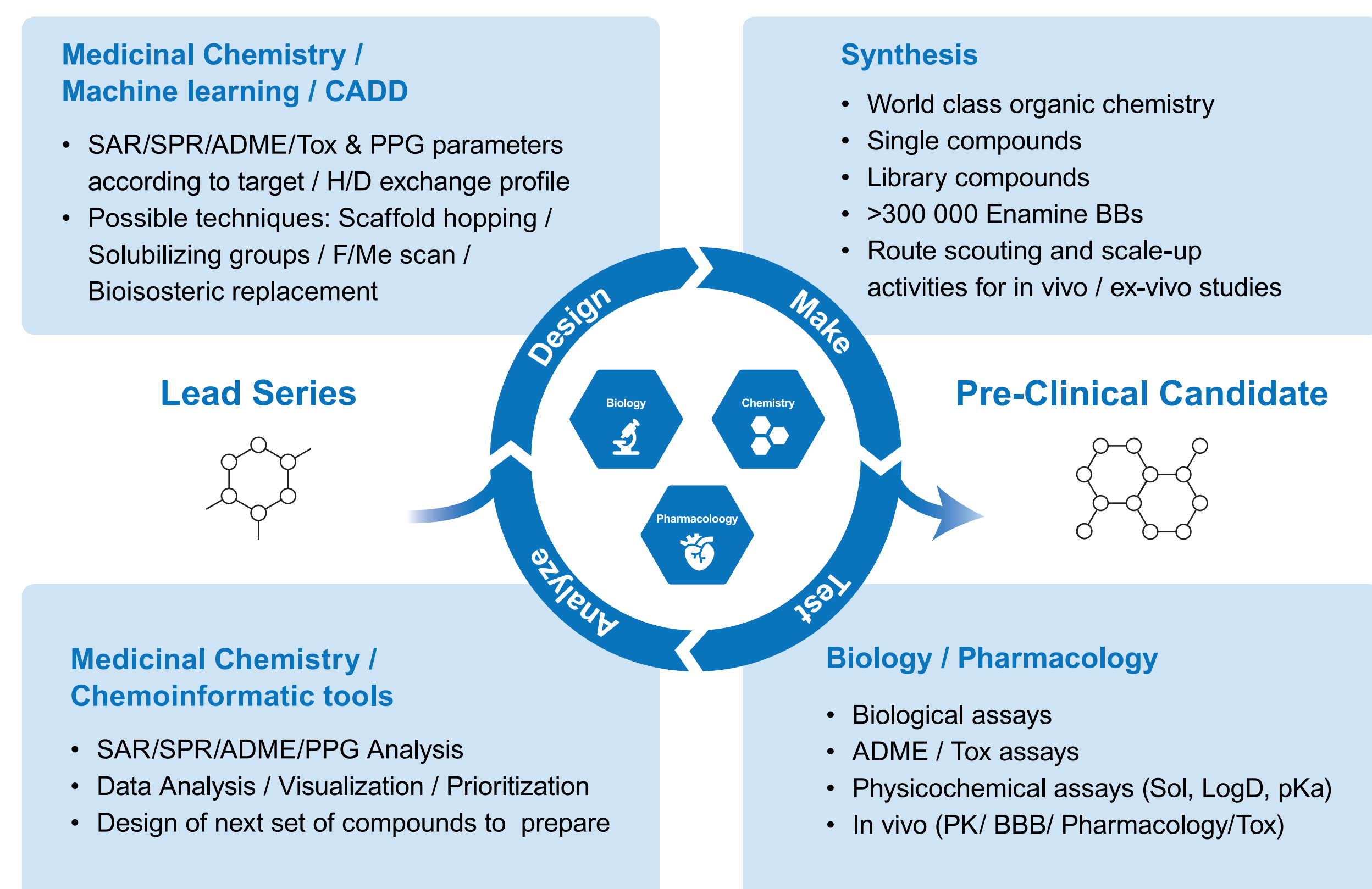


Contact

Aleksandra Bugera
a.bugera@enamine.net
Enamine Ltd, www.enamine.net
78, Winston Churchill St., 02094, Kyiv, Ukraine

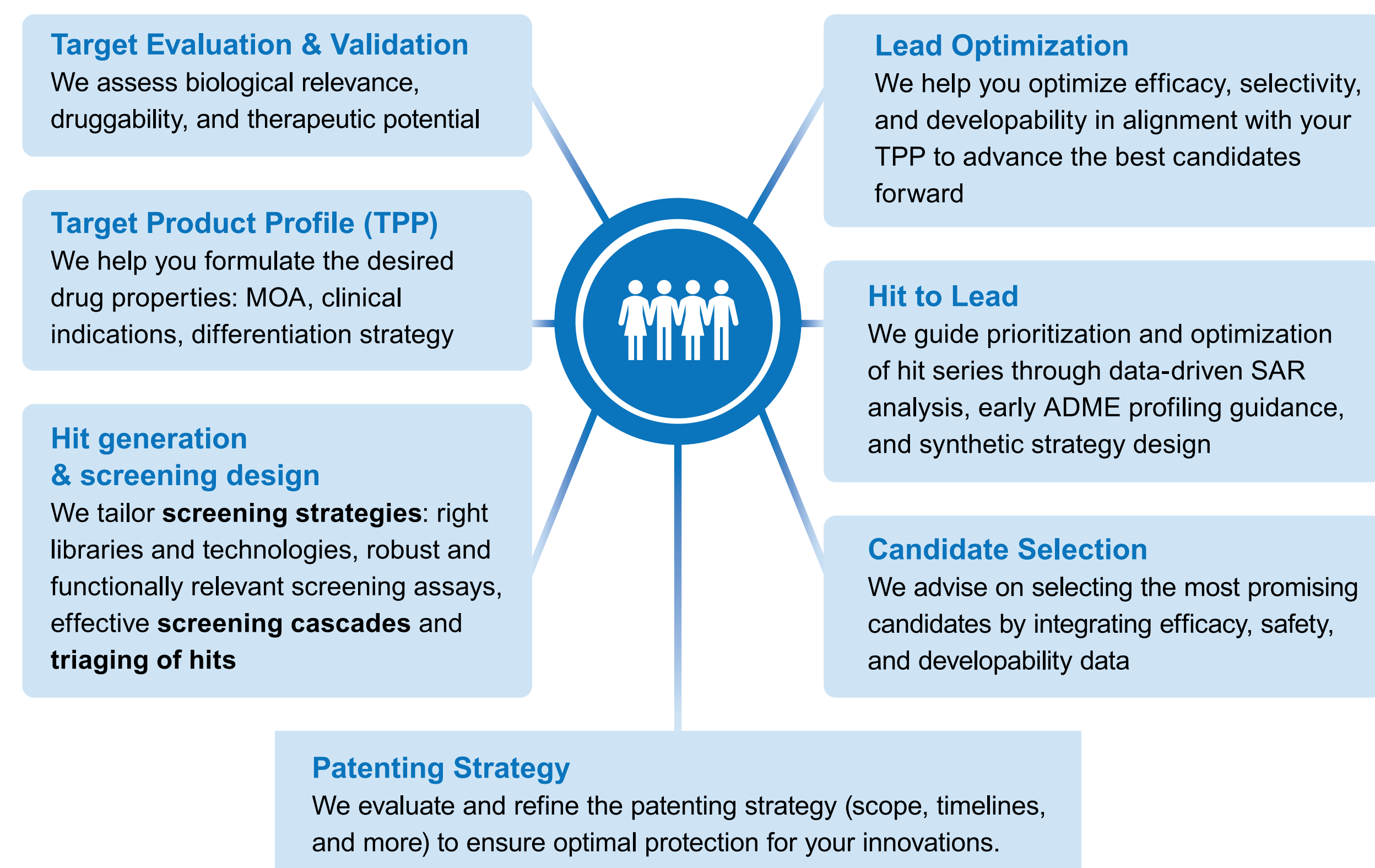
Lead Optimization (LO)

The LO phase transforms your lead series into a desired pre-clinical candidate through an optimized Design-Make-Test-Analyze cycle, enabled by Enamine's world-class services and Enamine Switzerland drug discovery expertise.



Consulting Activities

We specialize in solving your toughest drug discovery challenges through expert consulting. We provide insights where it matters most such as, but not limited to:



Why Working with Enamine Discovery Switzerland?

- Seamless Chemistry Integration:** Direct access to Enamine's extensive chemistry infrastructure (Enamine Screening Collection, REAL Space®, Make-on-Demand and off-the-shelf building blocks).
- End-to-End Support:** From hit identification to PCC nomination, fully customizable according to client needs.
- Medicinal Chemistry Leadership:** Highly experienced team of industrial drug hunters managing projects.
- Biology & Pharmacology Expertise:** In vitro biology, ADME/PK profiling, and assay support integrated into discovery workflows.
- Speed & Flexibility:** Fast synthesis cycles, tailored FTE or milestone-based collaborations.
- Proven Track Record:** Trusted by global pharma and biotech partners.