



Pfizer Reference Compounds

Expanding your access to trusted pharmaceutical standards

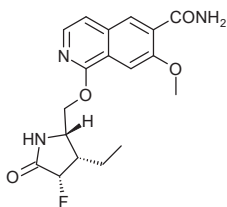
In modern drug discovery, reliable access to well-characterized reference materials is essential for accelerating research and ensuring reproducibility. Enamine is proud to collaborate with Pfizer to bring to the scientific community a unique collection of reference compounds directly through our Enamine marketplace and Enamines integration capabilities (i.e. punchout site, hosted catalogs, and API solutions). This allows researchers to explore and purchase from the catalog of selected Pfizer-provided drugs, chemical dormant, investigational compounds, and isotope-labelled molecules with appropriate quality control.

Together, Pfizer reference compounds and Enamine global infrastructure create a powerful resource for advancing science. Researchers can now explore new chemical space, validate findings against authentic benchmarks, and push forward the boundaries of medicinal chemistry.

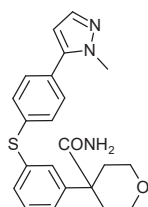
Enamine offers:

- Streamline access to valuable Pfizer reference standards;
- Enrich screening libraries and profiling sets;
- Enhance SAR exploration with unique compounds;
- Support translational and preclinical research with well-defined materials.

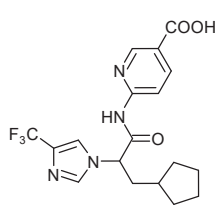
Discover the catalog today and see how this collaboration can help unlock your next breakthrough.



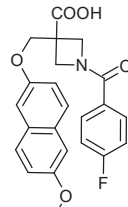
EN300-22059102



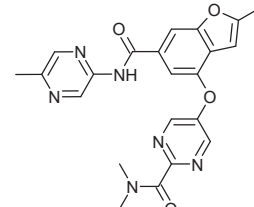
EN300-20605650



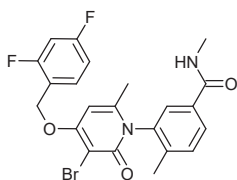
EN300-20046906



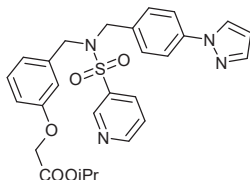
EN300-19655732



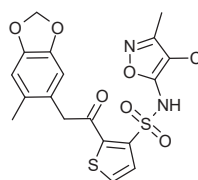
EN300-19960315



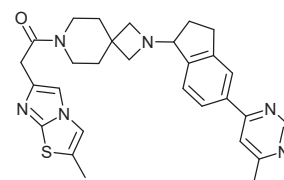
EN300-18161163



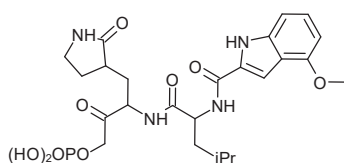
EN300-20605666



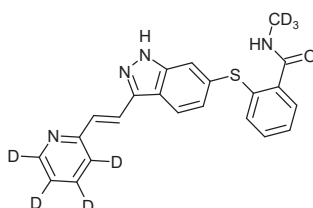
EN300-7415955



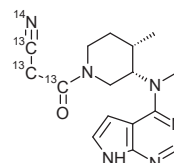
EN300-21607053



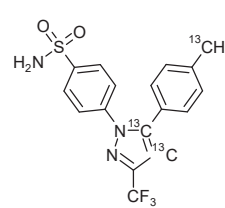
EN300-33435652



EN300-52416285



EN300-52416265



EN300-52416287

